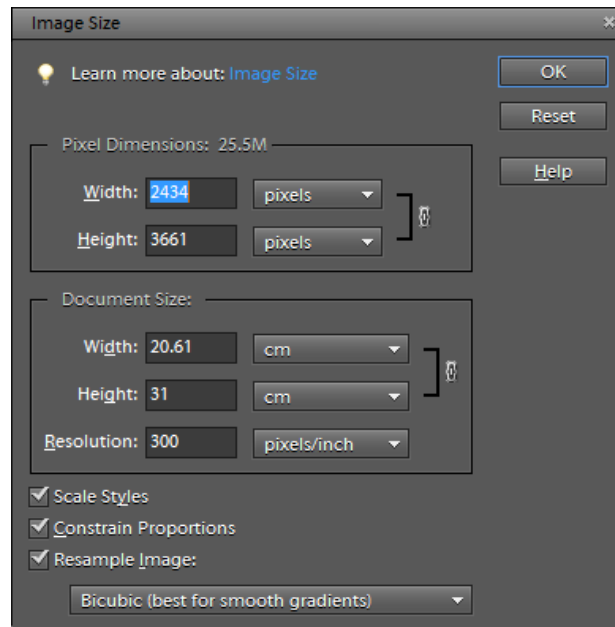


# Printing (Photoshop Elements)

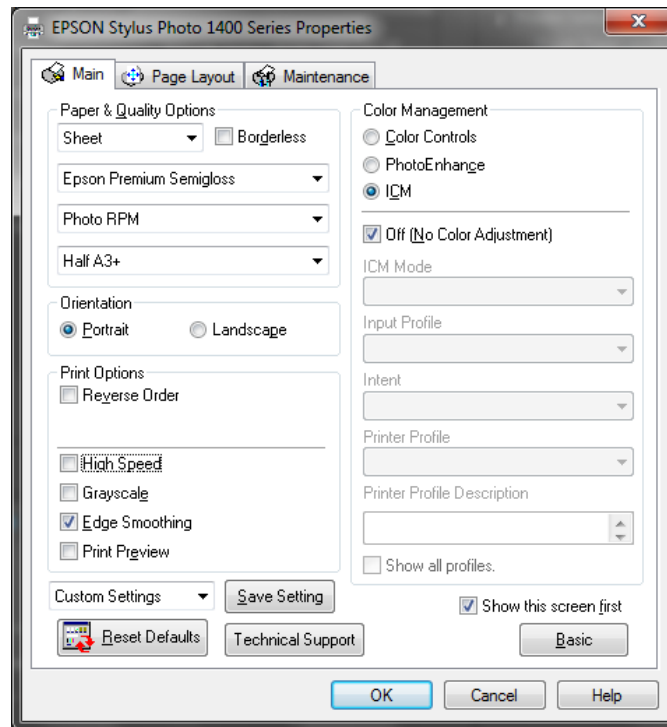
- Resize the image to fit the paper at a resolution of around 300ppi up to 360ppi



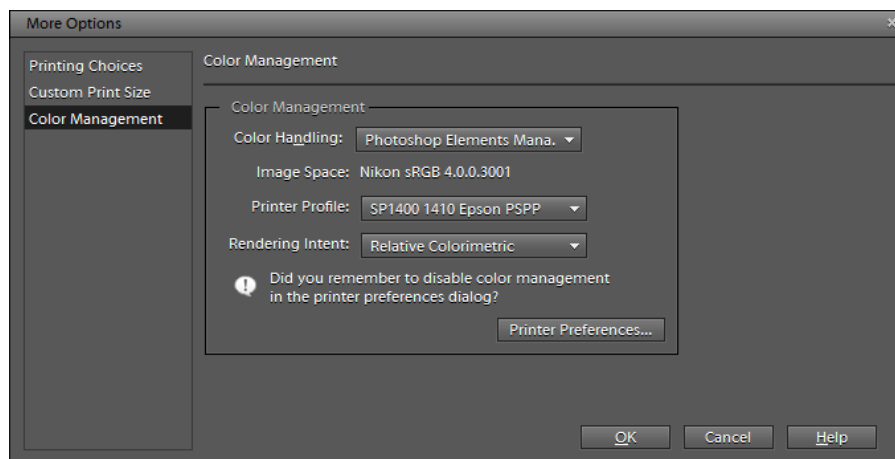
- File > Print



- Change Printer Settings to open the printer's properties window



- Choose paper type, change Photo to Photo RPM (raises printer resolution), select print size and turn off High Speed.
- Under Color Management choose ICM and tick Off (No Color Adjustment)
- Back in the Print window choose More Options and then Color Management
- Set Color Handling to Photoshop Elements Manages Colors and choose the appropriate Printer Profile from the drop down list (Print profiles are stored in C:\Windows\System32\spool\drivers\color)



- Finally, back in the Print window, click on Print